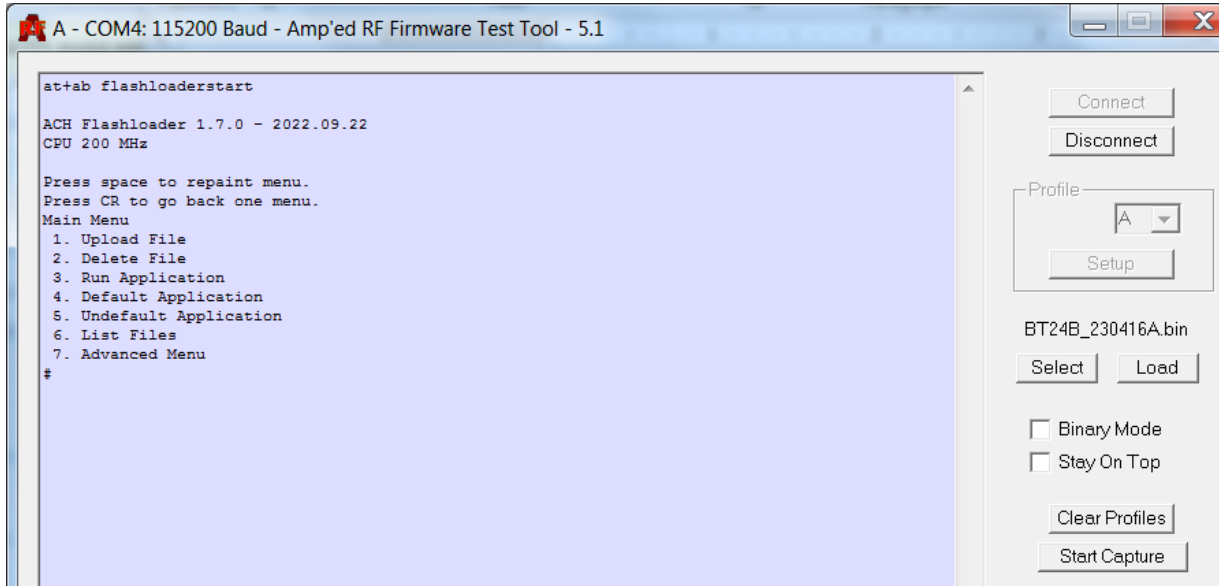


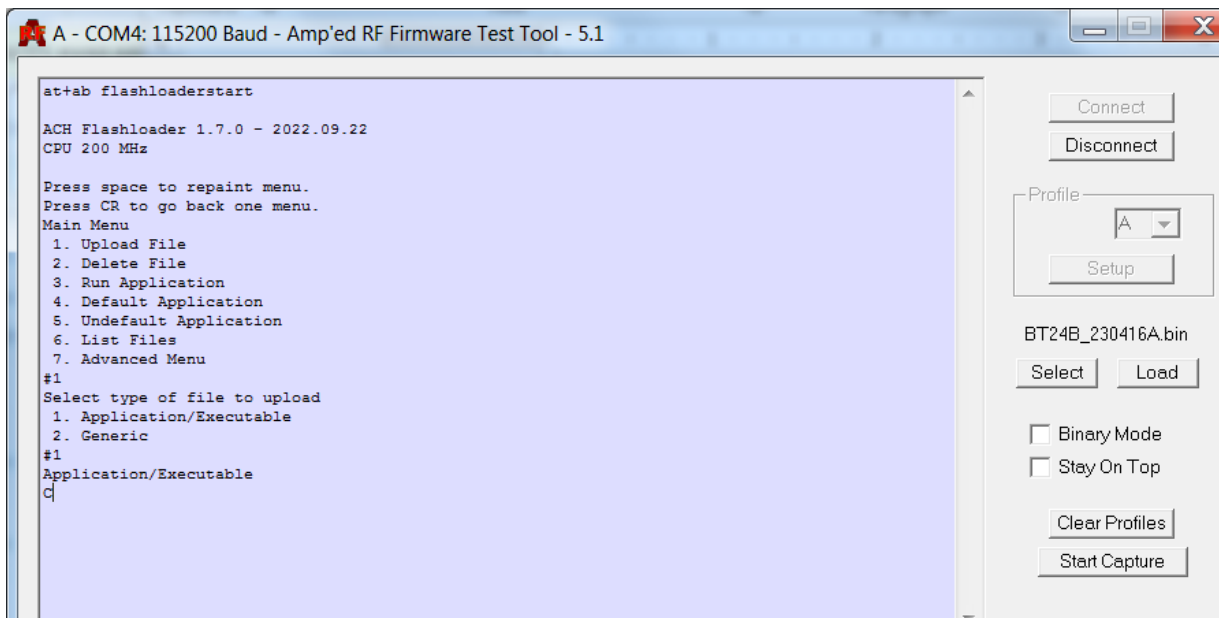
BT24B Module Flash Loading Application Note

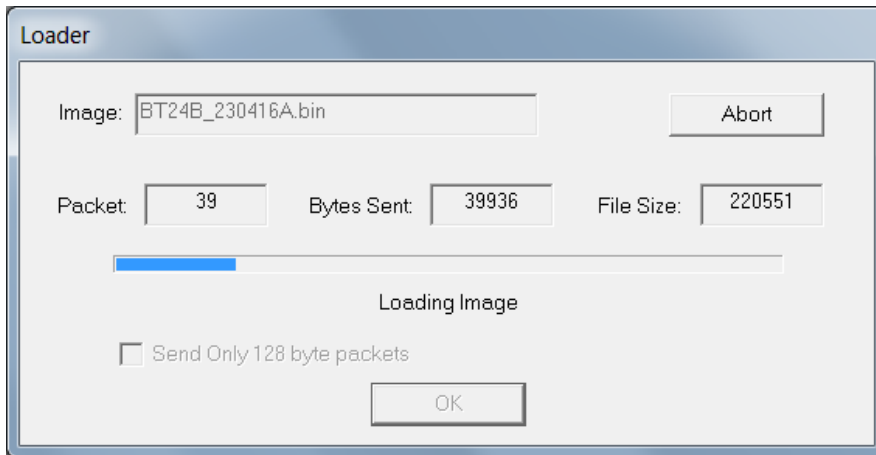
Upload application executable to BT24B

1. Use the command: `at+ab flashloaderstart`
This will remove the default designation, if any, on the current executable, and jump to the flash loader menu below.



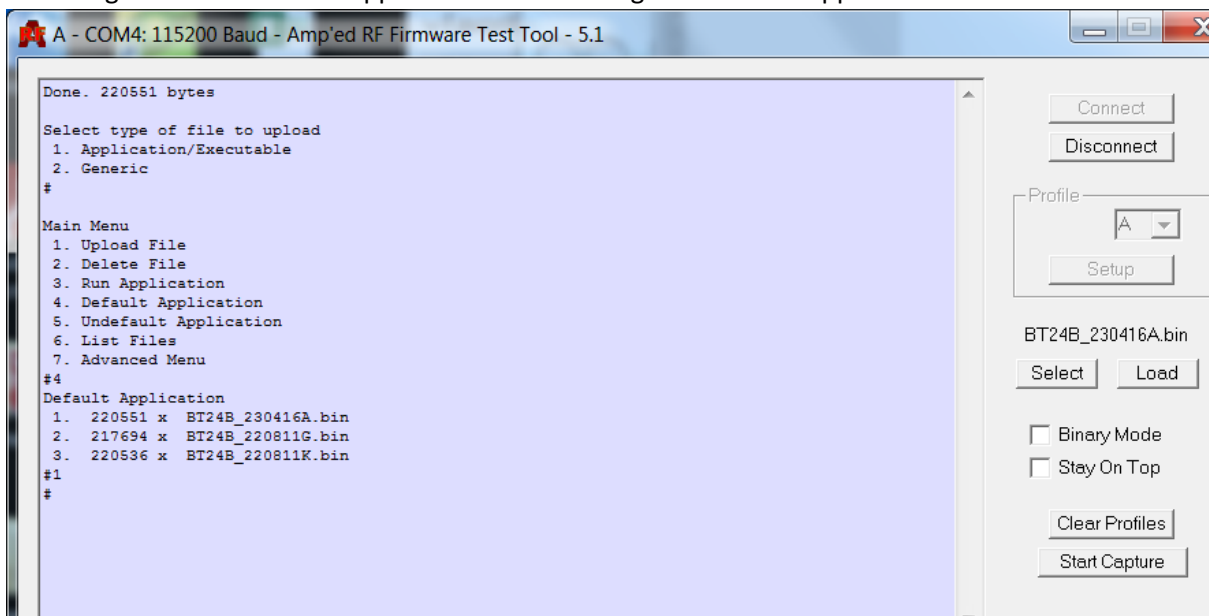
2. Use the "Upload File" option from the menu to begin loading over y-modem a new "Application/Executable" file.





3. Once complete, press the “Enter” key on the PC.

4. Designate a new default application version using the “Default Application” selection.



5. Press the “Enter” key again on the PC, and Run the new application from the menu item “Run Application”. If a default was selected, after this time it will run without asking for a menu prompt.

